



2 STOREY TERRACE HOME

Type A, Plot 20-49

Built-up Area : 2,204 sq ft

Land Area : 1,360 sq ft -
2,279 sq ft

2 STOREY TERRACE HOME

Type B, Plot 50-62

Built-up Area : 2,433 sq ft

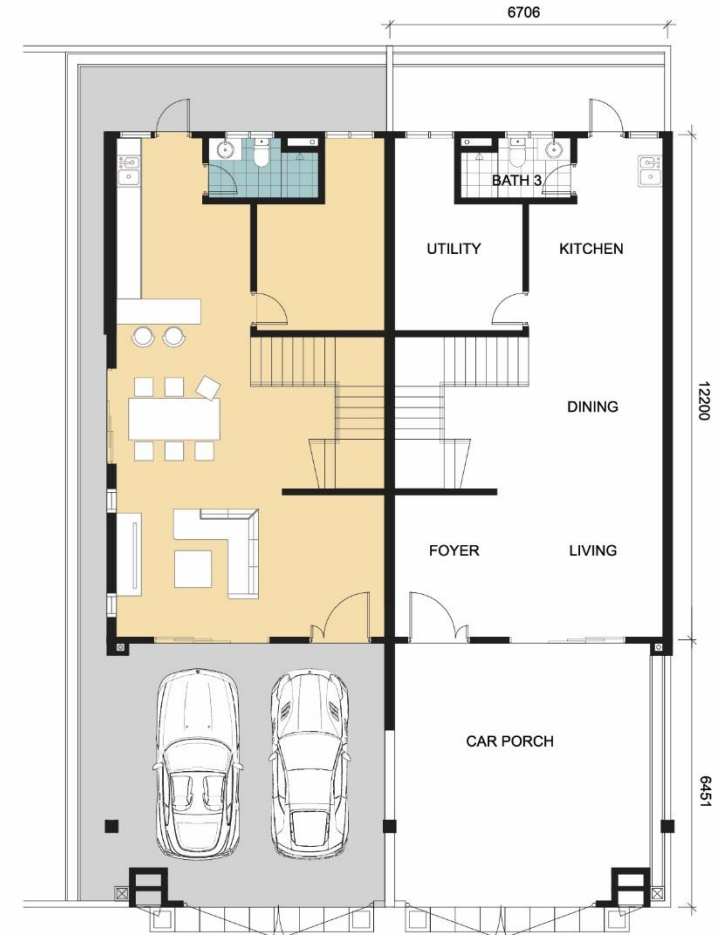
Land Area : 1,496 sq ft -
2,286 sq ft



Type A (Ground Floor)



Type A (First Floor)



Type B (Ground Floor)

2 STOREY TERRACE HOME

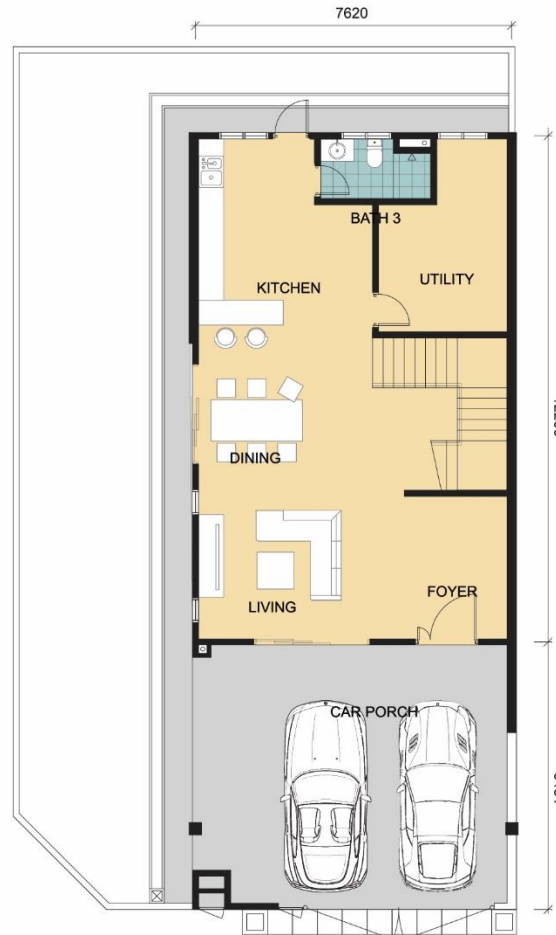
Type C, Plot 19

Built-up Area : 2,776 sq ft

Land Area : 2,636 sq ft



Type B (First Floor)



Type C (Ground Floor)



Type C (First Floor)

